

RESEARCH

Open Access



# Multiple endocrine neoplasia type 1: a new germline “homozygous” variant (c.201delC) caused by detection errors

Fan Zhang<sup>1,2</sup> , Xiaohui Yu<sup>2</sup> , Xiaoli Wang<sup>2</sup>  and Hua Shao<sup>3\*</sup> 

## Abstract

**Background:** Multiple endocrine neoplasia type 1 (MEN1) is a hereditary cancer syndrome caused by germline variants in the *MEN1* gene located on chromosome 11q13. We found a Chinese woman who had a pancreatic tumor, parathyroid tumor, adrenal tumor, and suspicion of gastrinoma.

**Case presentation:** The proband and her immediate family members underwent genetic detection. The results showed that two of the proband's six relatives had the same variants as the proband, and her sister also had the typical symptoms of MEN1. However, the first- and second-time genetic detection results showed that they were homozygous variants, which did not conform to Mendelian inheritance laws. Multiplex ligation-dependent probe amplification (MLPA) was used to rule out homozygous variants caused by a deletion of gene fragments in the proband and her immediate family members. The MLPA results showed that the gene deletion was absent in the *MEN1*. The results from the third genetic detection (redesigned the primer) showed that they had a heterozygous variant. A new *MEN1* germline variant [c.201delC (p.Ala68Profs\*51)], which could induce MEN1, was found in this study.

**Conclusions:** This newly identified germline variant could improve the identification of clinical phenotypes and the early diagnosis of MEN1. Clinician should consider the present of situation that intron variant causing detection error. Re-designing the primers close to the variant site for gene detection could avoid this situation.

**Keywords:** Multiple endocrine neoplasia type 1, *MEN1*, Germline variant, Sanger sequencing, Exon

## Background

Multiple endocrine neoplasia type 1 (MEN1), characterized by neoplasia in multiple endocrines and nonendocrine tissues, is an autosomal dominant hereditary tumor syndrome with a prevalence of about 1/30,000. The three major endocrine tissues affected by tumors in MEN1 are the parathyroid (95%), enteropancreatic neuroendocrine (50%), and anterior pituitary (40%). A diagnosis of MEN1 may be established in an individual by one of three criteria: on the basis of the occurrence of

two or more primary MEN1-associated endocrine tumors (i.e. parathyroid adenoma, enteropancreatic tumor, and pituitary adenoma); the occurrence of one of the MEN1-associated tumors in a first-degree relative of a patient with a clinical diagnosis of MEN; and identification of a germline MEN1 mutation in an individual, even if they are asymptomatic and have not yet developed serum biochemical or radiological abnormalities indicative of tumor development [1]. Besides, MEN1 patients could present with many other hormone-secreting, hormone nonsecreting, and nonendocrine tumors, such as adrenal cortical tumors, foregut carcinoids (bronchial, thymic or of the gastric enterochromaffin-like cells), facial angiofibromas, truncal collagenomas, lipomas,

\* Correspondence: [jacob\\_sh@126.com](mailto:jacob_sh@126.com)

<sup>3</sup>Department of General Surgery, Shengjing Hospital of China Medical University, Shenyang, China

Full list of author information is available at the end of the article



© The Author(s). 2022 **Open Access** This article is licensed under a Creative Commons Attribution 4.0 International License, which permits use, sharing, adaptation, distribution and reproduction in any medium or format, as long as you give appropriate credit to the original author(s) and the source, provide a link to the Creative Commons licence, and indicate if changes were made. The images or other third party material in this article are included in the article's Creative Commons licence, unless indicated otherwise in a credit line to the material. If material is not included in the article's Creative Commons licence and your intended use is not permitted by statutory regulation or exceeds the permitted use, you will need to obtain permission directly from the copyright holder. To view a copy of this licence, visit <http://creativecommons.org/licenses/by/4.0/>. The Creative Commons Public Domain Dedication waiver (<http://creativecommons.org/publicdomain/zero/1.0/>) applies to the data made available in this article, unless otherwise stated in a credit line to the data.

meningiomas, Barrett's esophagus, leiomyoma (uterine in females or in the esophagus), and ependymoma [2]. Approximately 25% of MEN1 patients die of a malignant gastrinoma (gastrointestinal neuroendocrine tumors) or foregut carcinoid tumor [2].

The related gene *MEN1*, which encodes the protein MENIN [3, 4], was first reported in 1988 [5] and is located on chromosome region 11q13 [3, 4]. It is composed of 10 exons that encode a 610 or 615 amino acid nuclear protein. MENIN interacts with the activator protein 1 (AP1) transcription factor JunD to inhibit JunD-activated transcription [6], which is related to cell growth regulation, cell cycle, genome stability, and synaptic plasticity. Detection of *MEN1* gene variants helps to distinguish MEN1 syndrome from other solitary tumors, such as somatic loss of heterozygosity (LOH) on chromosome 11q13, which is observed in 5–50% of such non-hereditary common sporadic tumors [7]. *MEN1* gene variants are distributed throughout the coding region, which has no obvious hot spots and no obvious genotype/phenotype correlation with tumor spectrum or clinical characteristics. More than 1,000 variants have been reported, including frameshift deletions or insertions (40%), nonsense (20%) and missense (25%) variants, splice site changes (8%), deletions or insertions (6%), and large deletions (1%) [7]. Thus, 70–75% of the *MEN1* gene variants are inactivating, causing premature protein truncation. However, many variants (such as rare missense in nonfamilial cases) can be classified as variants of unknown clinical significance due to the lack of available assays that could provide evidence for an adverse physiological consequence of such variants [8].

In this study, Sanger sequencing was performed on the proband who had a pancreatic tumor, parathyroid tumor, adrenal tumor, and suspicion of gastrinoma. The suspected *MEN1* variant site in exon 2 was screened using the combination of bioinformatics and public database. The results indicated that a variant in an intron could affect the sequencing results and led to the occurrence, at first, of homozygotes. The three family members who were detected as homozygotes in the 1st and 2nd times, were found to be heterozygotes by resequencing. A new *MEN1* germline variant [NM\_130802:c.201delC (p.Ala68Profs\*51) on Chr11:64577381 on assembly GRCh37] was found, which was the genetic pathogenesis of MEN1 in this family.

## Case presentation

### Patients

The proband (II-3) was a 49-year-old woman who was born to a family native to Liaozhong, Liaoning Province of China. She was admitted to our hospital with a “3-year duration of large appetite and rapid hungering,

intermittent recurrent fatigue, and palpitations, sweating for 2 years.” Denial of family history of illness.

A series of examinations was performed as below:

### Pancreas-related results

Islet cell tumors are the most common endocrine gland tumor in MEN1. During hospitalization, the proband had the typical Whipple's triad. She had two episodes of fasting hypoglycemia (2.63 mmol / L and 1.72 mmol / L, respectively). The proband's symptoms were quickly relieved by eating or receiving a glucose supplement. Meanwhile, the proband's serum glucose, insulin (INI), C-peptide (CPS), and pro-insulin (pro-INS) levels were tested, and the results showed that glucose was decreased while the insulin level was either in the normal reference range or increased at the time of the hypoglycemia (Supplementary Table 1). The insulin release indexes were 0.55 and 0.52 (normal range < 0.3) when the hypoglycemia occurred. A prolonged oral glucose tolerance test (OGTT) was performed, and the results presented hypoglycemia at the 240th and 300th minute with glucose levels of 2.01 mmol/L and 1.95 mmol/L, respectively. The corresponding insulin release indexes were 0.48 and 0.43, respectively (Supplementary Table 2).

The imaging examinations provided us with more information. The CT results of the pancreas showed that the mass in the pancreatic neck (8.0 × 6.8 × 8.4 cm) could have been a solid pseudopapillary tumor (Fig. 1 a1–a4). Circular reinforced nodules in the tail of the pancreas (2.8 × 2.7 cm) (Fig. 1 b1–b4) were considered to be homologous with the pancreatic neck mass (solid pseudopapillary tumor). The arterial phase of the pancreatic tail artery significantly strengthened the small nodules at the early stage, which could have been a neuroendocrine tumor. EUS is considered to be the most sensitive single method for the detection of pancreatoduodenal tumors. Compared with a CT scan and somatostatin receptor imaging, EUS has obvious advantages [9]. The patient's ultrasound gastroscopy showed that the head of the pancreas could not be observed in the full field because the mass was too big (Fig. 1 c1–c2). The mass in the tail of the pancreas (2.81 × 2.02 cm) (Fig. 1 c3–c4) was a hypoechoic mass, and the internal echoes were mixed.

Therefore, according to the laboratory and imaging examination, the mass in the pancreas was likely an islet cell tumor. However, the proband refused invasive examinations (including CT or ultrasound-guided needle biopsy), leading to a lack of pathological results. Later on, we checked other endocrine glands of the proband.

### Parathyroid-related results

In MEN1 patients, the prevalence of parathyroid tumors is about 95% [8]. The proband's serum tests showed that

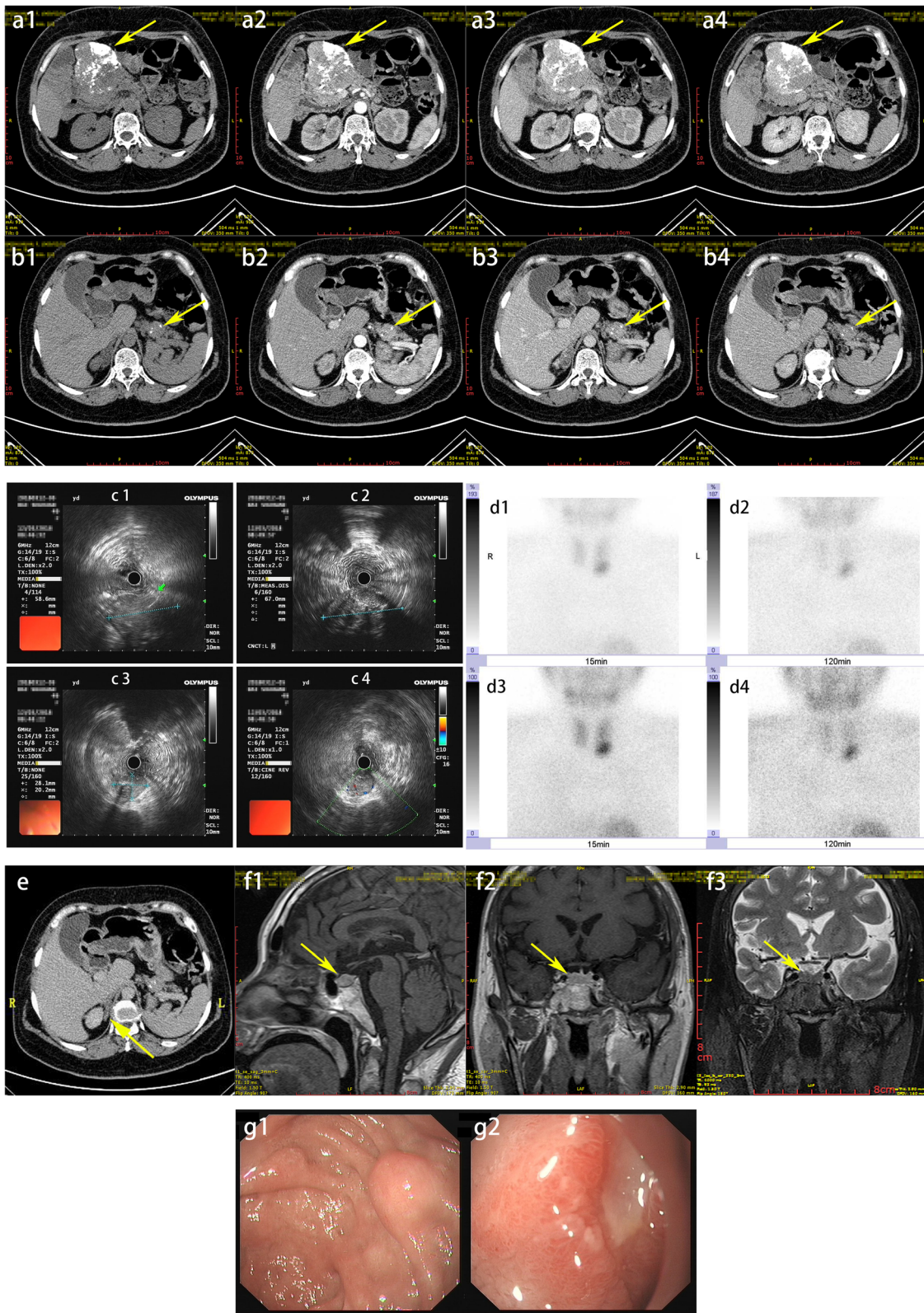


Fig. 1 (See legend on next page.)

(See figure on previous page.)

**Fig. 1** The proband's clinical imageology examination images. **A** a1–a4: Pancreatic neck lesions (8.0 × 6.8 × 8.4 cm) (a1, plain scan; a2, arterial phase; a3, portal phase; a4, delayed phase). **B** b1–b4: Ring enhanced nodule at the tail of the pancreas (2.8 × 2.7 cm) (b1, plain scan; b2, arterial phase; b3, portal phase; b4, delayed phase). **C** The hypochoic mass and the internal echoes were mixed. c1, c2: head of the pancreas (cannot be observed in the full field); c3, c4: the tail of the pancreas (2.81 × 2.02 cm). **D** d1, d3: 15 min after the <sup>99m</sup>Tc-stabimidine (MIBI) injection, an area of increased imaging agent appeared in the lower lobe of the left thyroid; d2, d4: 2 h after the injection, the area of distribution of the imaging agent under the left lobe of the thyroid did not decrease significantly. **E** Abdominal CT result showing that a mass occupied the right adrenal gland. **F** f1–f3. Pituitary-enhanced MRI examination showing that the hypophysis was full in shape (height 0.95 cm). f1, f2: T1WI; f3: T2WI. f1: sagittal view; f2, f3: coronal view. **G** g1, Multiple submucosal uplifts (the larger was about 0.6 × 0.8 cm) at the junction of the duodenal bulb and the descending part of the duodenum; g2, the distal shallow ulcer in the descending part of the duodenum was about 1.0 × 0.5 cm in size

the serum calcium (Ca<sup>2+</sup>) was increased (2.47–2.74 mmol/L, normal range 2.17–2.57 mmol/L) and serum phosphorus (P) was decreased (0.71–0.96 mmol/L, normal range 0.81–1.52 mmol/L). The serum parathyroid hormone was 553.6 pg/mL (normal range 15–65 pg/mL).

The results of the patient's bone mineral density measurements presented a decrease in bone mass in the lumbar spine and hip joint bones. Imaging modalities, such as parathyroid ultrasound and ECT, are valuable in MEN1 patients [10]. Parathyroid ultrasound showed a low echo at the posterior margin of the thyroid (right, 7.9 × 4.5 mm; left, 11.0 × 3.6 mm). Fifteen minutes after the <sup>99m</sup>Tc-stabimidine (MIBI) injection, the parathyroid ECT demonstrated an area of increased imaging agent in the lower lobe of the left thyroid (Fig. 1 d1, d3). Two hours after the injection, the imaging agent that was increased in the left lobe of the thyroid had not significantly decreased (Fig. 1 d2, d4), but no obvious abnormality on the right side. Therefore, the hypochoic right parathyroid gland reported by ultrasound may be caused by hypertrophic parathyroid gland. This phenomenon was caused by a highly functional parathyroid adenoma.

The above results confirmed that the proband had primary hyperparathyroidism that could derive from the highly functional parathyroid adenoma.

#### Adrenal gland-related results

Asymptomatic adrenal tumors occur in about 20–73% of MEN1 patients. Patients with MEN1 tend to develop aldosterone and adrenocortical cancer but are less likely to develop pheochromocytoma than those with adrenal incidentaloma [11]. The proband's CT result showed that a mass occupied the right adrenal gland (Fig. 1E).

The biochemical evaluation of adrenal tumors includes an evaluation of plasma free cortisone (COR), evening cortisol, plasma renin, and aldosterone concentration, and 1-mg overnight dexamethasone (DXM) suppression test [10]. In this case, the basal COR rhythm was turbulent. The 1-mg overnight DXM suppression test results demonstrated that the inhibition rate of COR was 76.4% (normal range > 50%). Therefore, Cushing syndrome was

excluded. The plasma renin, aldosterone and sex hormones concentrations were normal. Moreover, the patient did not have hypertension.

All of these findings suggested that a nonfunctional adrenal tumor existed.

#### Pituitary-related results

The serum prolactin (PRL) was two times the normal upper limit (1253 mIU/L, normal range 40–530 mIU/L; rechecked 1395 mIU/L). Serial basal PRL levels greater than 4240 mIU/L confirmed a prolactinoma [10]. The results of the metoclopramide stimulation test showed that PRL was 1.88 times higher than the basic value and the inhibition rate of PRL was 60.7% (normal range > 50%), as found by the bromocriptine inhibition test. This indicated that the patient suffered from hyperprolactinemia. Other pituitary hormones, including growth hormone (GH), IGF-1 (insulin-like growth factor 1), luteinizing hormone (LH), follicle-stimulating hormone (FSH), thyroid-stimulating hormone (TSH), and free thyroxine (FT4), were normal.

An MRI of the pituitary gland with contrast is the best diagnostic imaging [10]. The pituitary-enhanced MRI examination showed that the hypophysis was full in shape (height 0.95 cm) (Fig. 1 f1–f3), but no definite tumor was found. Based on the above serum and imaging examination, we believe that the proband's hyperprolactinemia could have been due to hyperplastic pituitary cells.

#### Stomach and duodenum-related tumor

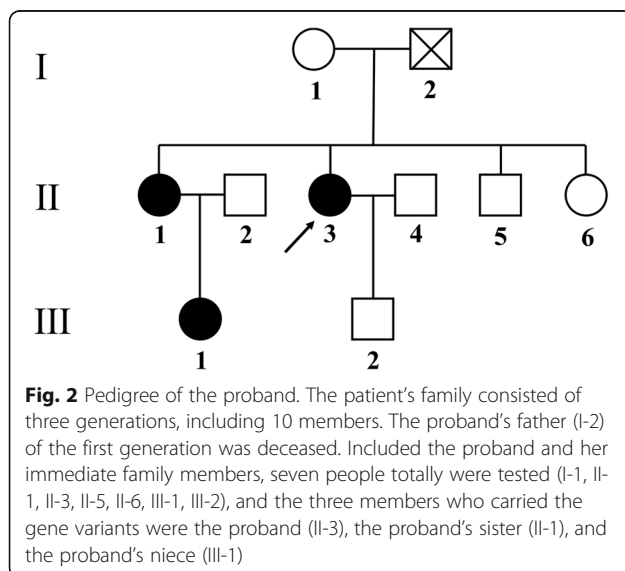
The incidence of neuroendocrine tumors (NETs) in gastrointestinal and pancreatic tissues is about 30–75%. However, autopsy studies have shown that the prevalence is as high as 80–100% [12]. NETs without function are more common than functional tumors. Moreover, because approximately 25% of MEN1 patients die from cancer due to malignant gastrinomas [2], an examination of the gastroduodenum is necessary. Serum pepsinogen I and gastrin 17 (GAS-17) were increased significantly (547 μg/L, normal range 70–150 μg/L; 78.6 pmol/L, normal range 0.01–5 pmol/L, respectively). The antibody result for *Helicobacter pylori* infection was negative.

Gastroscopy showed multiple submucosal uplifts (the largest was about  $0.6 \times 0.8$  cm) at the junction of the duodenal bulb and the descending part of the duodenum (Fig. 1 g1). A distal shallow ulcer in the descending part of the duodenum was about  $1.0 \times 0.5$  cm in size (Fig. 1 g2). The pathological diagnosis was moderate inflammation and erosion of the descending part of the duodenum. Duodenal gastrinomas in MEN1 syndrome are usually small (smaller than 1 cm), multifocal, and occur mainly in the proximal duodenum [10]. Therefore, no obvious gastrinoma lesions were found during the gastroscopy.

Known as Zollinger-Ellison syndrome (ZES), peptic ulcer disease can be caused by functioning NET-secreting gastrin because of increased gastric acid secretion [10]. As a result of the increased level of gastrin 17 and the occurrence of duodenal ulcers, the proband was likely to have had gastrinomas.

The main diagnosis of the proband was MEN1. She had pancreatic insulinoma, a tumor of the adrenal gland, primary hyperparathyroidism (adenoma of the parathyroid), hyperprolactinemia, gastric and duodenal ulcers (possibly Zollinger-Ellison syndrome), a right renal cyst, and myoma of the uterus.

It is well known that MEN1 is an autosomal dominant genetic disease. Therefore, in addition to the proband, we also carried out genetic tests on her relatives. The patient's family consisted of three generations, including ten members. The proband's father (I-2) of the first generation was deceased. Included the proband and her immediate family members, seven people totally were tested (I-1, II-1, II-3, II-5, II-6, III-1, III-2) (Fig. 2). Three members carried gene variants, including the proband (II-3), the proband's sister (II-1), and the proband's niece (III-1). The results of the other relatives' genetic tests



indicated normal *MEN1* gene sequences. No close relatives among the members of this family had married. The genetic map of the family members is given in Fig. 2. All family members in this study provided signed informed consent.

### Sanger sequencing

In 90% of cases, *MEN1* is usually inherited from the affected parent; the other 10% of cases occur by de novo variant. Germline inactivating variants of the *MEN1* gene on chromosome 11 is the main cause of MEN1 [10]. To determine whether the gene had changed, the proband and six relatives had Sanger sequencing and bioinformatics analyses (the methods of gene detection are detailed in the supplementary file).

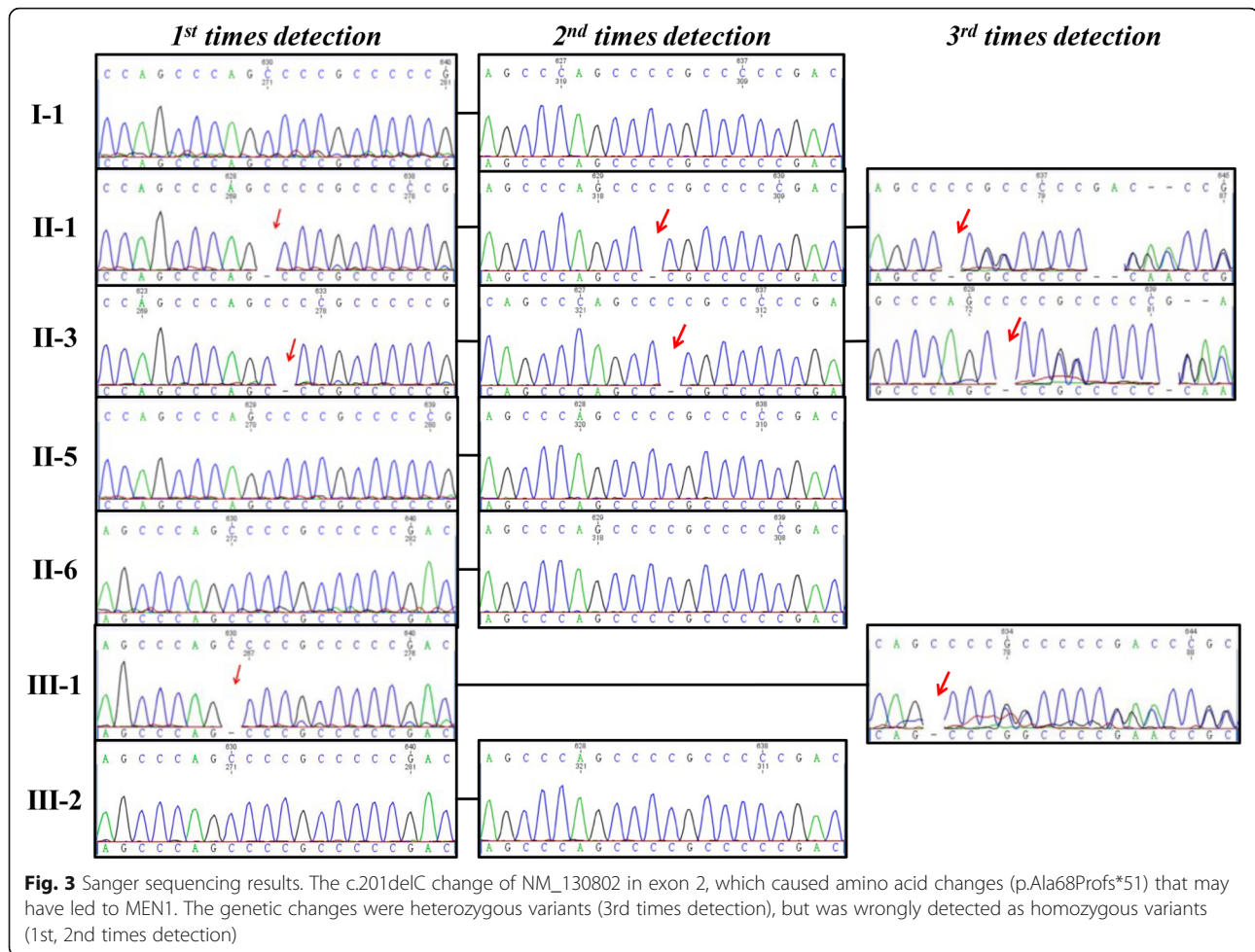
The gene detection results of the first times experiment (1st seq) showed that the proband (II-3), her sister (II-1), and her niece (III-1) had c.201delC change of NM\_130802 in exon 2, which caused amino acid changes (p.Ala68Profs\*51) that might lead to MEN1. Interestingly, the genetic changes were homozygous variants (Fig. 1 and 1st times detection). No genetic variants were found in the other relatives. However, we analyzed the patient's family pedigree, and neither the mother (I-1) nor the son (III-2) of the proband had this genetic variant. This result was not consistent with Mendelian genetic law. Therefore, we commissioned the other technicians to redesign the primers (for 2nd seq). We retested the samples and got the same result (c.201delC) (Fig. 2 and 2nd time detection).

Beijers et al. [13] found a germline and somatic mosaicism in a family with MEN1. They analyzed the blood using MLPA, which showed a minimal but consistently decreased signal for the *MEN1*-specific MLPA probes. The results from the MLPA trials on the proband (II-3) and her son (III-2), her sister (II-1), and her niece (III-1) were normal. This demonstrated that the gene deletion was absent in the *MEN1* of this family (Supplementary Fig. 1).

A Chinese family presenting with MEN1, with a heterozygous variant c.825-1G > A and a variant in intron 5 (IVS 5-1 G > A) of the *MEN1* gene, was considered by Zhiwei Ning et al. [14]. Considering the possibility of an intron change, we redesigned the primer (for 3rd seq) in the middle of exon 2 and redetected. It turned out that the proband, her sister, and her niece had heterozygous genetic variants (c.201delC, p.Ala68Profs\*51) in chromosome 11 (chr11:64577381), which is consistent with Mendelian genetic law (Fig. 3 3rd times detection).

### Discussion and Conclusions

In this study, we found a proband with typical tumor symptoms of MEN1, including a pancreatic tumor,



parathyroid tumor, adrenal tumor, and suspicion of gastrinoma, as well as pituitary changes. Subsequently, Sanger sequencing was used to test the proband for the *MEN1* gene. We found a new gene variant in exon 2 of *MEN1*, which could lead to these clinical symptoms. Due to the heritability of *MEN1*, the proband's family members were tested as well. Subsequently, we found that this Chinese family had *MEN1* and we found a new germline variant of NM\_130802 [c.201delC (p.Ala68Profs\*51) on Chr11:64577381 on assembly GRCh37].

Because of the results from the genetic testing, we recommended that the proband's family members be hospitalized for screening for disease related to *MEN1*. The proband's sister (II-1, 51 years old) accepted our recommendation for hospitalization. After several examinations, we found that the proband's sister also had the typical tumor symptoms of *MEN1*, including a pancreatic tumor and a parathyroid tumor. However, due to a force majeure factor, the niece of the proband (III-1) rejected the recommendation to be hospitalized for screening for the disease related to *MEN1* in the same year. In addition, any clinical symptoms related to

*MEN1* had not appeared. It may be because the *MEN1*-related tumor was not serious or she was not old enough (27 years old). Therefore, we recommended that she be hospitalized at her earliest convenience for screening for the disease related to *MEN1*. Three years later, the niece of the proband voluntarily was hospitalized because of neck discomfort, and it was found that she had the pancreatic tumor, a parathyroid tumor and an adrenal tumor. The clinical symptoms in this family indicated a *MEN1* gene variant in this Chinese family.

As we all know, the *MEN1* gene plays a role as a growth suppressor in *MEN1* tumorigenesis. In the germline, an inactivated variant in the *MEN1* gene on chromosome 11 causes *MEN1* syndrome. About 90% of *MEN1* cases are usually inherited from affected parents; the other 10% of cases are due to a de novo variant [10]. The loss of heterozygotes at the *MENIN* site on chromosome 11q13 showed biallelic inactivation of *MEN1* [15]. Knudson's two-hit model of *MEN1* gene tumorigenesis [3, 4, 16] is supported by the harmful germline variants observed in the *MEN1* kindreds and the loss of heterozygosity observed in the tumors of

MEN1 patients in a MEN1 family. Since the cloning of the *MEN1* gene in 1997, more than 1,000 families have been reported as MEN1 [17]. Marini et al. reported an analysis of *MEN1* variants in 410 patients' germlines. It was found that there were 99 different variants, of which 41 were frameshift, 26 missense, 13 nonsense, 11 splice site variants, 4 in-frame small deletions, and 4 large intragenic deletions across one exon [18]. In 2008, Lemos and Thakker conducted a comprehensive analysis of 1336 *MEN1* variants that had been reported in the first decade after the identification of the *MEN1* gene [17]. Paola Concolino et al. reported 208 new germline variants of *MEN1* from 2007 to 2015 [19]. We found the *MEN1* genetic variant c.201delC (p.Ala68Profs\*51) to be a new germline variant site in exon 2 that had not yet been reported.

In the *MEN1* gene, the most mutated exons are 2, 9, and 10. In particular, in exons 2 and 10, the most common type of variant is a frameshift [19]. Most of the frameshift and nonsense variants cause protein truncation, resulting in the loss of functional domains, including NLSs located at the C-terminal segment. In the past few years, six new intron variants have been found in MEN1 patients. One of the intron variants (IVS3 + 18 C > T) relates to a c.1546-1547insC variant in a Chinese MEN1 family, which was reported by Zha et al. [20]. Zhiwei Ning et al. [14] found a germline variant of a heterozygous G to A variation at the nucleotide position-1 of intron 5 (c.825-1G > A or IVS5-1G > A) in a MEN1 family.

Interestingly, a very rare situation in this family was that the proband and her daughter were shown to have the homozygous variant in exon 2 when the variant was detected during the first and second times. This result could not be explained by the Mendelian law of inheritance. An animal experiment confirmed that the homozygous variant of *MEN1* could lead to death in rats [21]. Obviously, this "homozygous" variant might have been a mistaken diagnosis.

The first reason that we considered was that the large fragment deletion in the gene, which led to the DNA single strand, was detected twice in the Sanger sequencing. Gross deletions, usually detected by the MLPA technique [22–25], are the rarest kind of *MEN1* variant. The complete *MEN1* gene deletion has been considered by different authors [22, 26, 27]. The first (exons 1–3) [24, 25], central (exons 5–6) [23], and final (exons 8–10) regions of the gene [28] have been described by other gross deletions. Beijers et al. [13] were the first to report on a family with combined germline and somatic mosaicism for MEN1. They used MLPA to analyze the father and found both germline and somatic mosaicism of MEN1. However, the MLPA results showed that there was no large fragment deletion in the genes of the three MEN1 patients in this study.

Faced with this weird "homozygous" variant result, we considered secondly the primer problem. In the former two detections in which we got the suspicious results, we had designed the forward primer in intron 1 and the reverse primer in intron 2 in order to contain all the bases in exon 2. In the third detection, we re-designed both the forward and reverse primers in exon 2 and close to the variant site. We got the gene detection results that not only complied with Mendelian law of inheritance, but also made sense in her genetic family. Thus, we believe that there were some mistakes exist in the first two times gene detections. The possible reason for this situation is that the gene sequence corresponding to primer most probably not compatible with the intronic variant(s) present in this family. In other words, the primer pairs stated for first two gene detections are actually located in regions with a relatively dense variant presence (intron).

We tried to find the variant site or large fragment deletion range in intron 1. However, after too many times experiments, we still can't accurately detect the variant site in intron. This may be due to the fact that there are relatively dense variants site in the introns, and we cannot design a suitable primer pair to perform the sanger sequence. Since introns have limited meaning in the structure of translation products, they do not code for proteins and will not cause changes in phenotype. Therefore, in this study, we giving up to continue searching for variant site in intron. It could be useful for further scientific research, but useless for the clinical diagnosis and treatment of MEN1 to proband. But in general, it explained the reason for the genetic test error. When faced with this situation again, clinicians could consider the presence of this situation and solve this issue by re-designing the primer closed to the variant site in exon.

There are two limitations for this study. Firstly, the proband has temporarily refused the invasive examinations (including CT or ultrasound-guided needle biopsy) and surgery for any of her tumors, so we could not obtain tumor tissue for further genetic heterozygosity testing, pathological diagnosis, or cell biology testing. Secondly, about the adrenal tumor, we didn't check the catecholamines because this proband never have hypertension. Thirdly, due to the fact that there are relatively dense variants site in the introns, although we performed too many times experiment try to find out the accurate intron variant site that led to the detection error, it ended in failure. And considering the introns were limited meaningful for the structure of translation products and clinical diagnosis and treatment, we are finally giving up to find the accurate variant site in intron.

This is the first report of a Chinese family with a new MEN1 germline variant in exon 2 (c.201delC

(p.Ala68Profs\*51)). It can improve the identification of clinical forms of MEN1 and can be used to diagnose the disease at an early stage. In addition, when the detection error present, the clinician should re-design the detection primer close to the variant site could help find the real genetic changes.

#### Abbreviations

MEN1: Multiple endocrine neoplasia type 1; AP1: Activator protein 1; LOH: Loss of heterozygosity; CT: Computed Tomography; MRI: Magnetic resonance imaging; EUS: Endoscopic ultrasound; parathyroid ECT: Emission Computed Tomography; EDTA: Ethylenediaminetetraacetic acid; ACMG: American College of Medical Genetics and Genomics; MLPA: Multiplex Ligation-dependent Probe Amplification; INI: Insulin; CPS: C peptide; pro-INS: Pro-insulin; OGTT: Oral glucose tolerance test; Ca<sup>2+</sup>: Calcium; P: Phosphorus; MIBI: 99mTc-stabimidine; COR: Cortisone; DXM: 1-mg overnight dexamethasone; PRL: Prolactin; GH: Growth hormone; IGF-1: Insulin-like growth factor 1; LH: Luteinizing hormone; FSH: Follicle-stimulating hormone; TSH: Thyroid-stimulating hormone; FT4: Free-thyroxine; NET: Neuro-endocrine tumors; GAS-17: Gastrin 17; ZES: Zollinger-Ellison Syndrome; ECL: Entero-Chromaffin-Like; HPT: Hyperparathyroidism

#### Supplementary information

The online version contains supplementary material available at <https://doi.org/10.1186/s13053-022-00216-2>.

##### Additional file 1

##### Additional file 2

#### Acknowledgements

We thank the proband, her families and the technique support Bingqing Jia (Beijing Macro & Micro-Test Med-Tech Co., Ltd.) for their contributions in this study.

#### Authors' contributions

All the authors materially participated in this work, have read and approved the final manuscript. FZ is the first author of this study. HS is the corresponding author supervising this work. FZ and XH Y managed the case and drafted the manuscript. XL W provided relevant ideas for research methods. FZ performed an analysis of all data interpretation from the literature review. HS reviewed the manuscript and substantively revised it. We acknowledge that all authors participated sufficiently in the work and take public responsibility for its content, and to have approved the submitted version.

#### Funding

This study was supported by the Chinese National Natural Science Foundation (Grant: 81500605). The funder had no role in study design, data collection or analysis, or in the presentation or publication of the results.

#### Availability of data and materials

Reference sequence for MEN1 (NM\_130802.2) is available in the Genbank repository ([https://www.ncbi.nlm.nih.gov/nuccore/NM\\_130802.2](https://www.ncbi.nlm.nih.gov/nuccore/NM_130802.2)). Databases used in this study were Human Gene Mutation Database (HGMD, <http://www.hgmd.cf.ac.uk>), ClinVar database (<https://www.ncbi.nlm.nih.gov/clinvar>). We have registered this new germline variant in the National Center for Biotechnology Information. ClinVar; [VCV001064409.1], <https://www.ncbi.nlm.nih.gov/clinvar/variation/VCV001064409.1>. Data sharing does not apply to this article as no datasets were generated or analyzed during the current study.

#### Declarations

##### Ethics approval and consent to participate

This study was performed following the approval of the institutional review board at the Medical Science Research Ethics Committee of the First Hospital

of China Medical University (No. 2018-027) and the 1964 Helsinki declaration and its later amendments or comparable ethical standards.

#### Consent for publication

Informed consent was obtained from all individual participants included in the study. All the individual participants consented to the publication of medical data (including figures from diagnostic imaging results and histological examination results). The patient's husband signs informed consent on behalf of all individual participants. All authors read and approved the final manuscript for publication.

#### Competing interests

All authors declare that they have no conflict of interest.

#### Author details

<sup>1</sup>Department of Hematology, Shengjing Hospital of China Medical University, Shenyang, China. <sup>2</sup>Department of Endocrinology and Metabolism, Institute of Endocrinology, NHC Key Laboratory of Diagnosis and Treatment of Thyroid Diseases, The First Hospital of China Medical University, 110001 Shenyang, Liaoning Province, P. R. China. <sup>3</sup>Department of General Surgery, Shengjing Hospital of China Medical University, Shenyang, China.

Received: 18 October 2021 Accepted: 21 February 2022

Published online: 07 March 2022

#### References

- Thakker RV, Newey PJ, Walls GV, Bilezikian J, Dralle H, Ebeling PR, et al. Clinical practice guidelines for multiple endocrine neoplasia type 1 (MEN1). *J Clin Endocrinol Metab.* 2012;97:2990–3011.
- Brandi ML, Gagel RF, Angeli A, Bilezikian JP, Beck-Peccoz P, Bordi C, et al. Guidelines for diagnosis and therapy of MEN type 1 and type 2. *J Clin Endocrinol Metab.* 2001;86:5658–71.
- Chandrasekharappa SC, Guru SC, Manickam P, Olufemi SE, Collins FS, Emmert-Buck MR, et al. Positional cloning of the gene for multiple endocrine neoplasia-type 1. *Science.* 1997;276:404–7.
- Lemmens I, Van de Ven WJ, Kas K, Zhang CX, Giraud S, Wautot V, et al. Identification of the multiple endocrine neoplasia type 1 (MEN1) gene. The European Consortium on MEN1. *Hum Mol Genet.* 1997;6:1177–83.
- Larsson C, Skogseid B, Oberg K, Nakamura Y, Nordenskjold M. Multiple endocrine neoplasia type 1 gene maps to chromosome 11 and is lost in insulinoma. *Nature.* 1988;332:85–7.
- Agarwal SK, Guru SC, Heppner C, Erdos MR, Collins RM, Park SY, et al. Menin interacts with the AP1 transcription factor JunD and represses JunD-activated transcription. *Cell.* 1999;96:143–52.
- Thakker RV. Multiple endocrine neoplasia type 1 (MEN1). *Best Pract Res Clin Endocrinol Metab.* 2010;24:355–70.
- Agarwal SK. Multiple endocrine neoplasia type 1. *Front Horm Res.* 2013;41:1–15.
- van Asselt SJ, Brouwers AH, van Dullemen HM, van der Jagt EJ, Bongaerts AH, Kema IP, et al. EUS is superior for detection of pancreatic lesions compared with standard imaging in patients with multiple endocrine neoplasia type 1. *Gastrointest Endosc.* 2015;81:159–67 e2.
- Singh G, Jialal I. Multiple Endocrine Neoplasia Type 1 (MEN I, Wermer Syndrome). In: *StatPearls*. edn. Treasure Island (FL); 2020.
- Gatta-Cherifi B, Chabre O, Murat A, Niccoli P, Cardot-Bauters C, Rohrer V, et al. Adrenal involvement in MEN1. Analysis of 715 cases from the Groupe d'étude des Tumeurs Endocrines database. *Eur J Endocrinol.* 2012;166:269–79.
- Norton JA, Krampitz G, Jensen RT. Multiple Endocrine Neoplasia: Genetics and Clinical Management. *Surg Oncol Clin N Am.* 2015;24:795–832.
- Beijers H, Stikkelbroeck NML, Mensenkamp AR, Pfundt R, van der Luit RB, Timmers H, et al. Germline and somatic mosaicism in a family with multiple endocrine neoplasia type 1 (MEN1) syndrome. *Eur J Endocrinol.* 2019;180:K15–9.
- Ning Z, Wang O, Meng X, Xing X, Xia W, Jiang Y, et al. MEN1 c.8251G > A mutation in a family with multiple endocrine neoplasia type 1: A case report. *Mol Med Rep.* 2015;12:6152–6.
- Marx SJ. Recent Topics Around Multiple Endocrine Neoplasia Type 1. *J Clin Endocrinol Metab.* 2018;103:1296–301.
- Agarwal SK, Kester MB, Debelenko LV, Heppner C, Emmert-Buck MR, Skarulis MC, et al. Germline mutations of the MEN1 gene in familial multiple



- endocrine neoplasia type 1 and related states. *Hum Mol Genet.* 1997;6:1169–75.
17. Lemos MC, Thakker RV. Multiple endocrine neoplasia type 1 (MEN1): analysis of 1336 mutations reported in the first decade following identification of the gene. *Hum Mutat.* 2008;29:22–32.
  18. Marini F, Giusti F, Fossi C, Cioppi F, Cianferotti L, Masi L, et al. Multiple endocrine neoplasia type 1: analysis of germline MEN1 mutations in the Italian multicenter MEN1 patient database. *Endocrine.* 2018;62:215–33.
  19. Concolino P, Costella A, Capoluongo E. Multiple endocrine neoplasia type 1 (MEN1): An update of 208 new germline variants reported in the last nine years. *Cancer Genet.* 2016;209:36–41.
  20. Zha BB, Liang W, Liu J, Cheng J, Hong XW, Liu J, et al. Mutation analysis in a Chinese family with multiple endocrine neoplasia type 1. *Chin Med J (Engl).* 2010;123:569–73.
  21. Lemos MC, Harding B, Reed AA, Jeyabalan J, Walls GV, Bowl MR, et al. Genetic background influences embryonic lethality and the occurrence of neural tube defects in Men1 null mice: relevance to genetic modifiers. *J Endocrinol.* 2009;203:133–42.
  22. Tham E, Grandell U, Lindgren E, Toss G, Skogseid B, Nordenskjold M. Clinical testing for mutations in the MEN1 gene in Sweden: a report on 200 unrelated cases. *J Clin Endocrinol Metab.* 2007;92:3389–95.
  23. Owens M, Ellard S, Vaidya B. Analysis of gross deletions in the MEN1 gene in patients with multiple endocrine neoplasia type 1. *Clin Endocrinol (Oxf).* 2008;68:350–4.
  24. Raef H, Zou M, Baitei EY, Al-Rijjal RA, Kaya N, Al-Hamed M, et al. A novel deletion of the MEN1 gene in a large family of multiple endocrine neoplasia type 1 (MEN1) with aggressive phenotype. *Clin Endocrinol (Oxf).* 2011;75:791–800.
  25. Zatelli MC, Tagliati F, Di Ruvo M, Castermans E, Cavazzini L, Daly AF, et al. Deletion of exons 1–3 of the MEN1 gene in a large Italian family causes the loss of menin expression. *Fam Cancer.* 2014;13:273–80.
  26. Mohrmann I, Gillissen-Kaesbach G, Siebert R, Caliebe A, Hellenbroich Y. A de novo 0.57 Mb microdeletion in chromosome 11q13.1 in a patient with speech problems, autistic traits, dysmorphic features and multiple endocrine neoplasia type 1. *Eur J Med Genet.* 2011;54:e461–4.
  27. Rusconi D, Valtorta E, Rodeschini O, Giardino D, Lorenzo I, Predieri B, et al. Combined characterization of a pituitary adenoma and a subcutaneous lipoma in a MEN1 patient with a whole gene deletion. *Cancer Genet.* 2011;204:309–15.
  28. Manzoni MF, Franchi GM, Sartorio SM, Di Rosa E, Cappelletti C, Piani C, et al. A novel MEN1 gene mutation. *Cancer Genet Cytogenet.* 2008;180:165–7.

## Publisher's Note

Springer Nature remains neutral with regard to jurisdictional claims in published maps and institutional affiliations.

**Ready to submit your research? Choose BMC and benefit from:**

- fast, convenient online submission
- thorough peer review by experienced researchers in your field
- rapid publication on acceptance
- support for research data, including large and complex data types
- gold Open Access which fosters wider collaboration and increased citations
- maximum visibility for your research: over 100M website views per year

**At BMC, research is always in progress.**

Learn more [biomedcentral.com/submissions](https://biomedcentral.com/submissions)

